

**Nokia Customer Care
6265/6265i/6268 (RM-66)
Mobile Terminals**

Disassembly

Contents	Page
Safety Information	3
ESD Protection	3
Disassembly Instructions.....	4
1. Place Protective Film on the A-cover	4
2. Remove the Battery Cover	4
3. Remove the Antenna/E-cover	5
4. Remove the Camera Gasket	5
5. Remove the Screws	6
6. Remove the A-cover from the B-cover	7
7. Remove the A-cover Keymat	8
8. Remove the Mini SD Door	8
9. Remove the Screws	9
10. Remove the D-cover from the C-cover	9
11. Remove the PWB	10
12. Remove the Camera	10
13. Remove the Main Keymat	10
Keymat Removal ONLY.....	11
14. Remove the Main Flex Assembly	12
15. Remove the LCD Flex Cable and Assembly	13
16. Remove the Volume Key	14
17. Remove the Camera Key	15
18. Remove the IHF Assembly	15
19. Remove the BT Antenna	16
20. Remove the Camera Flash	16
21. Remove the DC Jack	17
22. Remove the Microphone	17

Safety Information

Adhere to the following guidelines when assembling and disassembling the phone.

- **QUALIFIED SERVICE**
Only qualified personnel may install or repair phone equipment.
- **ACCESSORIES AND BATTERIES**
Use only approved accessories and batteries. Do not connect incompatible products.
- **CONNECTING TO OTHER DEVICES**
When connecting to any other device, read its user's guide for detailed safety instructions. Do not connect incompatible products.

ESD Protection

Nokia requires that phone repair centers have sufficient ESD protection against static electricity when servicing cellular phones. Use the following guidelines:



- A cellular phone that is ready for use can be handled normally without ESD protection. The battery can be replaced in normal conditions of use.
- Use ESD protection when replacing a color cover, except for the phone covers which can be replaced by the customer.
- All electronic parts of the phone, including the display, are susceptible to ESD. Resistors also can be damaged by static electricity discharge.
- All ESD-sensitive parts must be packed in metallized protective bags during shipping and handling outside any ESD Protected Area (EPA).
- Every repair action involving opening the phone or handling the phone components must be done under ESD protection.
- ESD-protected spare part packages **MUST NOT** be opened/closed outside an EPA.

For more detailed information about ESD protection and EPAs, contact your local Nokia Customer Care representative.

Disassembly Instructions

1. Place Protective Film on the A-cover

Gently place protective film on the A-cover to prevent scratches during servicing.



2. Remove the Battery Cover

- a. Turn the mobile terminal off by pressing and holding the End key.
- b. Using both hands, gently depress the battery cover catch. Slide and then lift the battery cover off.



- c. Remove the battery.

3. Remove the Antenna/E-cover

- a. Using the SRT-6 opening tool, gently pry the E-cover from the D-cover, starting at the lower left corner as shown below.
- b. Continue by sliding the tool along the same side to the top corner of the E-cover.
- c. Lift to remove the E-cover.



4. Remove the Camera Gasket

Using tweezers, gently pull upward on the camera gasket to remove it.



5. Remove the Screws

- a. Slide the mobile terminal into the open position and remove the screw caps located on the back of the slide assembly.



- b. Undo the two IP-4 Torx 4 Plus screws that retain the assembly.



Caution: Do not damage paint surface on the B-cover.

Note: Do not reuse the screws. Discard and replace with new screws for reassembly.

6. Remove the A-cover from the B-cover

- a. With the mobile terminal slide in the open position, open the SD media door.



- b. Using the SRT-6 opening tool, gently pry the A-cover from the slide mechanism.



- c. Rotate the A-cover off of the slide assembly.



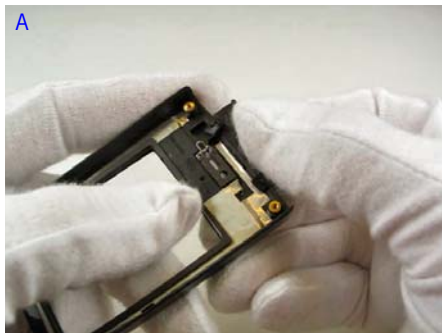
7. Remove the A-cover Keymat

Grasp the A-cover with the inside facing you. Using gentle pressure, unsnap the keymat from its retainers.



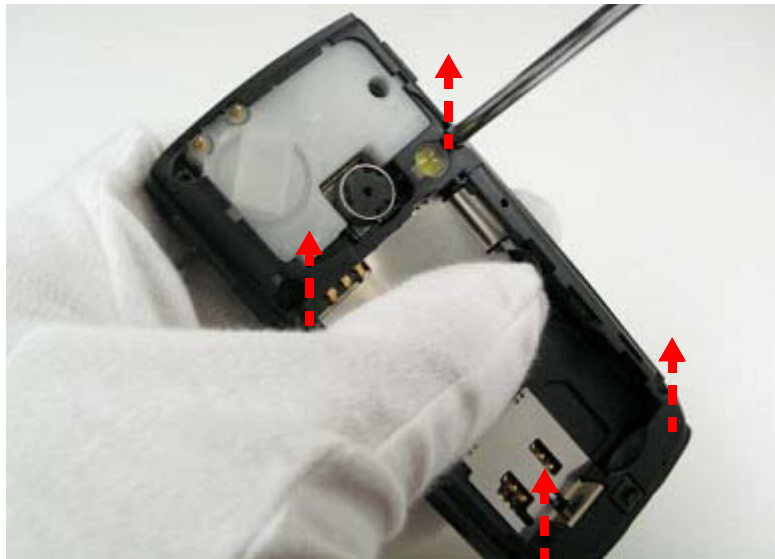
8. Remove the Mini SD Door

- a. Push the SD Door upwards and away from you.
- b. Twist and rotate the door to release it from the A-cover.



9. Remove the Screws

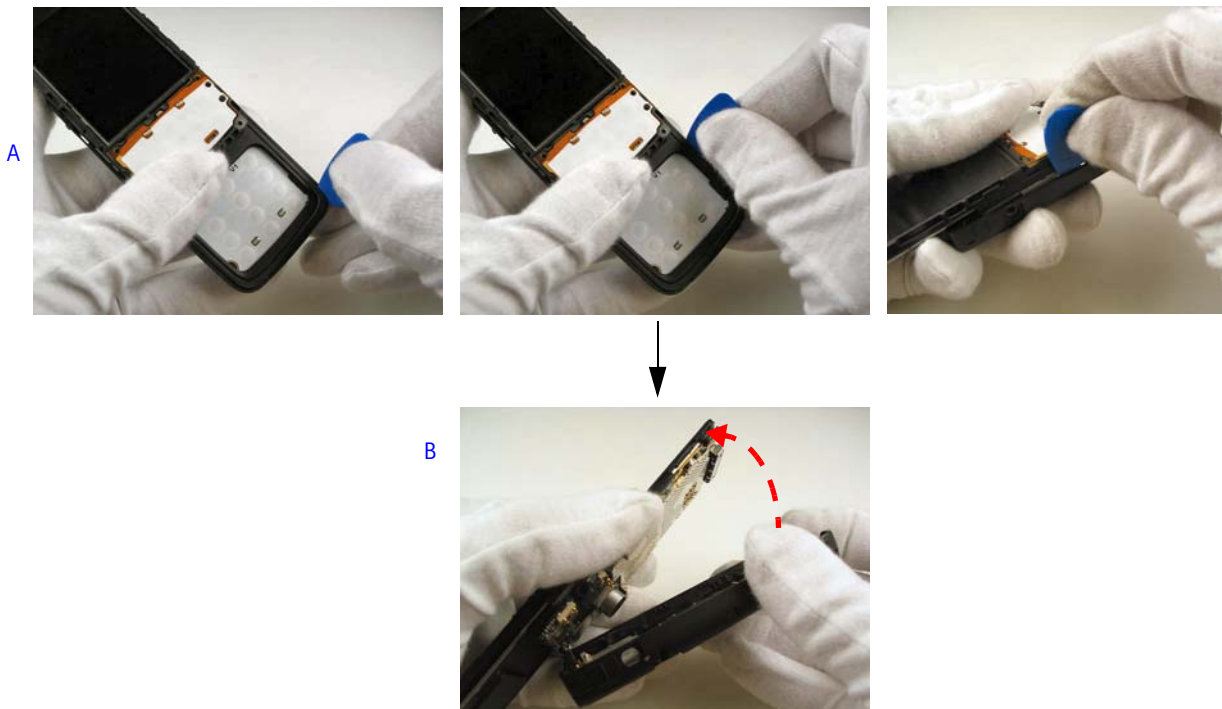
Using a Torx T-6 screwdriver, undo and remove the four T-6 screws that retain the assembly.



Note: Do not reuse the screws. Discard and replace with new screws for reassembly.

10. Remove the D-cover from the C-cover

- a. Using the SRT-6 tool, gently pry open the C/D-cover assembly starting at the bottom of the mobile terminal and working your way along both sides.
- b. With the mobile terminal slide in the open position, release the snaps on both sides. Rotate the D-cover off of the assembly.



11. Remove the PWB

With the mobile terminal slide in the open position, use the SRT-6 opening tool to gently loosen the two snaps and the flex connector holding the PWB in place.



12. Remove the Camera

- a. Place the PWB on the workstation.
- b. Gently insert the SS-45 camera removal tool over the camera module and push downward until it snaps over the camera.
- c. Squeeze the tool to grasp the camera module and lift it from its mount.



13. Remove the Main Keypad

- a. Use the SRT-6 opening tool to gently pry the keypad from the PWB/Domesheet assembly.
- b. Once removed, place protective film on the back of the keypad to protect the retaining adhesive.



Keypad Removal ONLY

For servicing that requires **removal of the KEYMAT ONLY**, follow the instructions below. Disassembly of the mobile terminal is not required for keypad removal.

- a. If keys are damaged or missing and only keypad removal is required, use the SRT-6 opening tool to gently lift the keypad from its position.
- b. Replace keypad.



Caution: Take care not to damage surrounding mechanics or domesheet.

14. Remove the Main Flex Assembly

- a. Using an IP-4 Torx 4 Plus screwdriver, undo the four IP-4 Torx 4 Plus screws that retain the main flex assembly to the slide assembly.



Note: Do not reuse screws. Discard and replace with new screws for reassembly.

- b. Using the SRT-6 opening tool, release the assembly and fold it upwards to reveal the flex cable underneath.



- c. Use the SRT-6 opening tool to disconnect the flex connection.



- d. Open the slide assembly to align the UI flex cable slots. Gently pull the upper main flex assembly and the UI flex cable from the side assembly.



15. Remove the LCD Flex Cable and Assembly

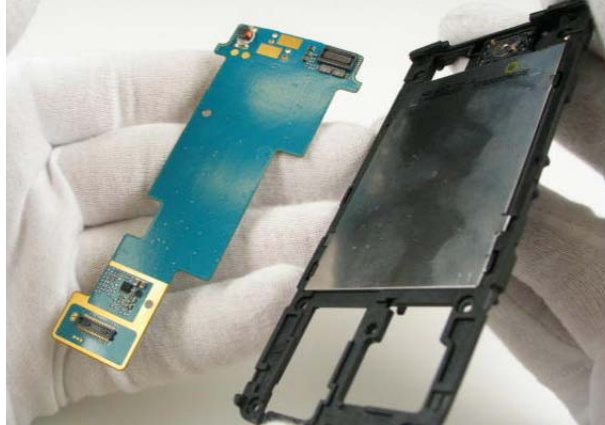
- a. With the slide assembly in the closed position, use the SRT-6 opening tool to gently pry the mechanism from the center slot located at the bottom.
- b. Twist the SRT-6 opening tool to separate the assembly.
- c. Separate the upper PWB and the LCD assembly from the slide mechanism.



- d. Using the SRT-6 opening tool, gently open the LCD flex connector.



- e. Rotate the upper UI PWB to remove it from the LCD frame.



- f. Holding the LCD frame in both hands, pull the sides outwards and press under the frame to remove the LCD.



16. Remove the Volume Key

Using tweezers, gently pull the volume key from its retaining pins, away from the IHF assembly.



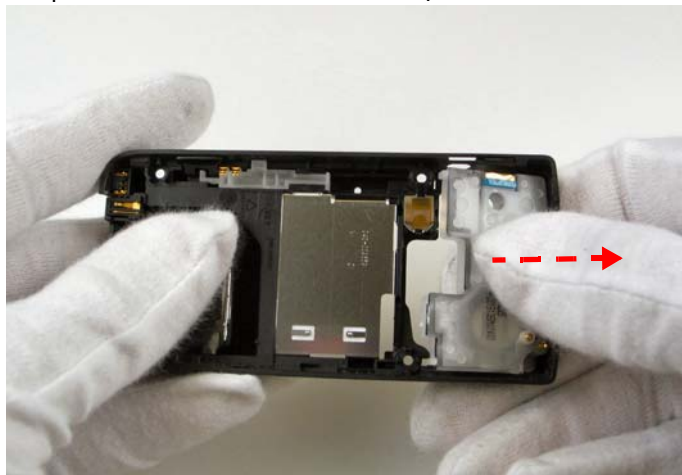
17. Remove the Camera Key

Gently free the camera key from its mount using tweezers.



18. Remove the IHF Assembly

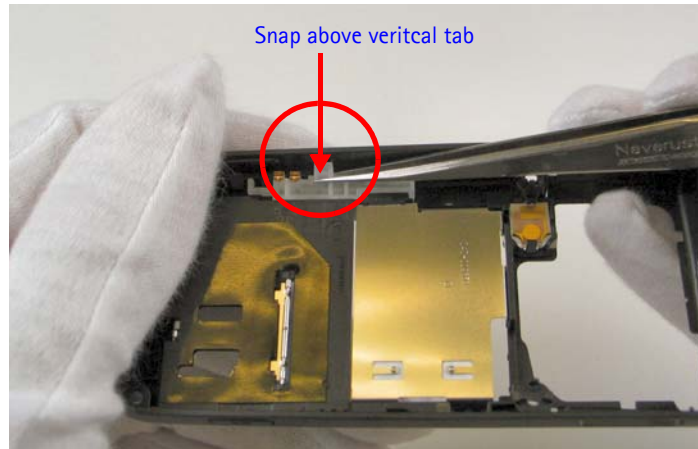
Grasp the D-cover with the inside facing you. Gently pull toward the top of the D-cover to release the clips and rotate the IHF assembly to free it from the D-cover.



Caution: Do not to damage the IHF gasket located on top of the IHF assembly.

19. Remove the BT Antenna

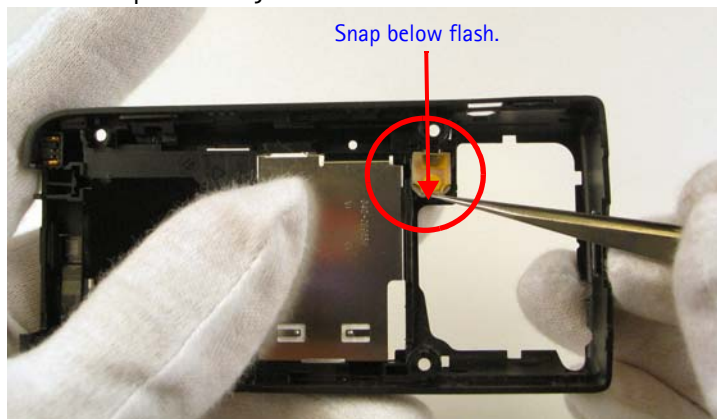
Using tweezers, gently remove the BT antenna from the D-cover. Note the snap located just above the vertical tab.



Caution: Do not damage the metal antenna springs.

20. Remove the Camera Flash

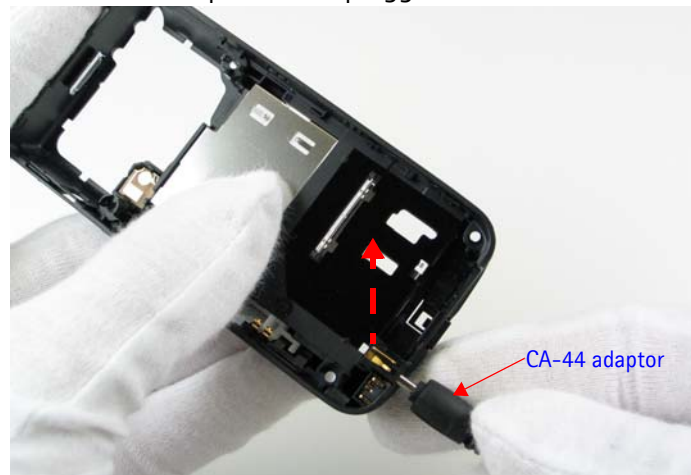
Using tweezers, gently release the flash mounting tab and lift the camera flash from its retainer. Note the snap located just below the flash.



Caution: Do not bend the retaining snap.

21. Remove the DC Jack

Using a CA-44 adaptor, plug into the DC jack and gently lift it from the D-cover assembly. Make sure the adaptor is not plugged into an electric source.



22. Remove the Microphone

- Using tweezers, fold back the microphone connector to reveal the access slot.
- Insert tweezers and lift the assembly vertically from its mount.



This page intentionally left blank.